

# Allianz PIMCO Mortgage

## Monthly factsheet from Allianz Invest KAG mbH

30.04.2012

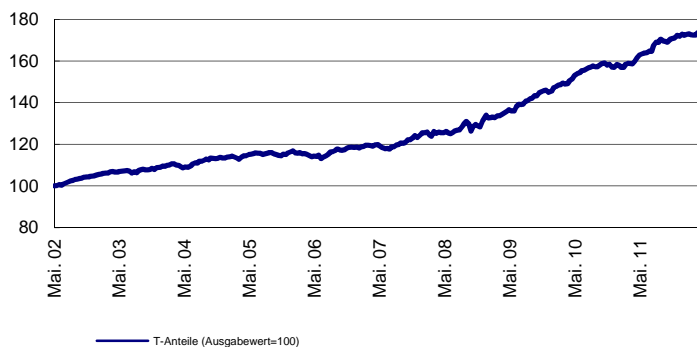
### Investment Objective

Investments are effected in US-Mortgage Bond Securities. Most of them are guaranteed by the US government. Because of permanent foreign exchange hedging the currency risk is not applicable.

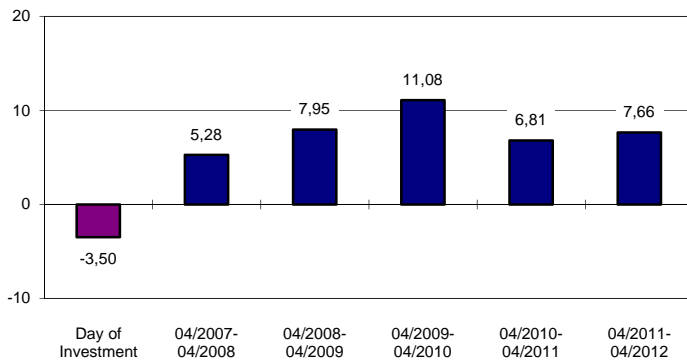
### Performance History (%)<sup>1</sup>

	1 Year	3 Years	5 Years	S.Inc.
per annum(p.a.)	7,66%	8,49%	7,73%	5,69%

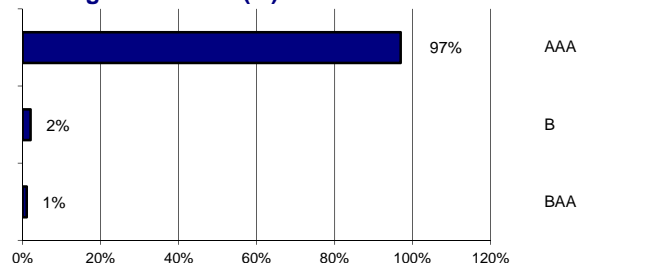
### Performance since Inception<sup>1</sup>



### Annual Performance (%)<sup>2,3</sup>



### Rating Breakdown (%)



### SRRI

← Typically lower rewards  
← Typically lower risk

Typically higher rewards→  
Typically higher risk→



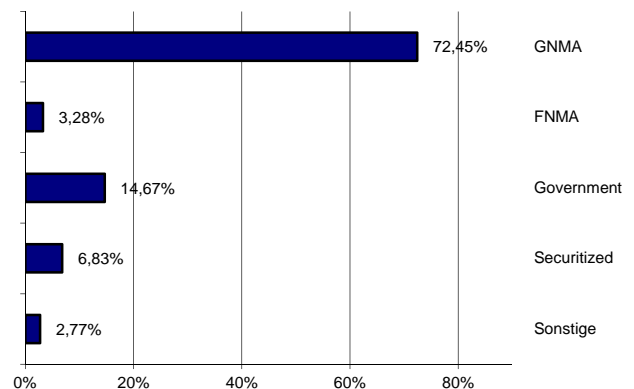
### Investment Class



### Key Information (in EUR)

ISIN / WKN	AT0000675459 (A) / 67545 AT0000675467 (T) / 67546	
Management Company	Allianz Invest KAG mbH	
Custodian Bank	Allianz Investmentbank AG	
Fiscal Year	15.09. - 14.09.	
Date of Issuance	22.05.2002 (A) 22.05.2002 (T)	
Frequency of Distribution	15.11. every year	
Payout	2011	€ 1,62 per share
Issuance Price	€ 62,86 (A) € 80,3 (T)	
Asset of the Fund	€ 153,99	mn.
Maturity	2,78 years	
Mod. Duration	2,41%	
Fund Management	PIMCO	
Front-end load in %	3,50	
Management fee in %p.a.currently	0,90 (max 1,00)	
TER in %	0,84	
Price publication	<a href="http://www.allianzinvest.at">www.allianzinvest.at</a>	
Hotline	01/505 54 80 - 4848	
E-Mail (common information)	sales@allianzinvest.at	
E-Mail (orders,account)	konto@allianzinvest.at	

### Asset Allocation Breakdown (%)



### SRRI

This risk and reward indicator is based on past performance data and calculated in accordance with European legislation. It may not be a reliable indication of the future risk profile of the fund. The categorisation of the fund is not guaranteed and may change in the future. Even the lowest category 1 does not mean a risk-free investment.

### Investment Class 2 (conservative)

Capital preservation is important for you, but to gain a higher yield you are willing to accept the risk of losses. Short-term fluctuations in value cannot be ruled out. The concentration on investments with high credit ratings limits the risk of great losses. On the other hand, the capital gains potential in this segment is limited. Performance is expected above money market investments. Recommended investment period: at least 3 years.

Front-end load will be charged at the acquisition of the fund units. Any front-end loads reduce the capital employed and the performance. Past performance is no guarantee of future results. Performance-Calculation according to method as defined by OeKB. Individual performance will vary. The sales prospectus and business reports in german language can be obtained free of charge from Allianz Investmentbank AG and Allianz Invest Kapitalanlagegesellschaft mbH, both Hietzinger Kai 101-105, A-1130 Wien. This publication constitutes advertising. 1. Performance calculated at the net asset value, excl. front-end load. 2. The illustration is based on the accumulated performance of the stated periods excluding front-end load. 3. Front-end load is only calculated at date of investment. E.g.: Investment-amount of EUR 1000,- will be reduced by front-end load of 4% (EUR 38,46). Within custody the investor has to be aware of annual depository costs which will lower the performance of the investment.