

Allianz Invest Austria Plus

Monthly factsheet from Allianz Invest KAG mbH

30.04.2012

Investment Objective

Investments are effected in Austrian equities as well as equities of East-European countries, which are members of the European Union.

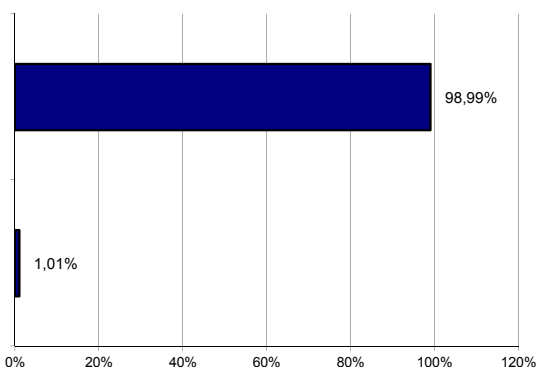
Performance History (%) ¹

	1 year	3 years	5 years	s. inc.
per annum (p.a.)	-19,35%	10,81%	-8,87%	5,79%

Performance since Inception¹



Asset Allocation Countries (%)



SRRI

← Typically lower rewards
← Typically lower risk

Typically higher rewards→
Typically higher risk→



Investment Class



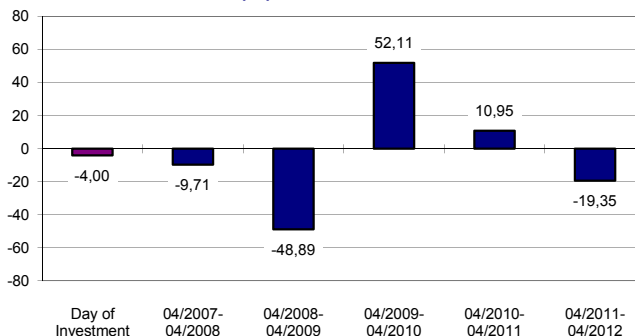
Key Information (in EUR)

ISIN / WKN	AT0000619713 (A) / 61971
	AT0000611405 (T) / 61140
Management Company	Allianz Invest KAG mbH
Custodian Bank	Allianz Investmentbank AG
Fiscal Year	15.09. - 14.09.
Date of Issuance	05.10.2004 (A) 24.01.2005 (T)
Frequency of Distribution	15.11. every year
Payout 2011	€ 2,38 per share
Issuance Price	€ 69,25 (A) € 75,04 (T)
Asset of the Fund	€ 3,82 mn.
Fund Management	Mag. Christian Ramberger
Front-end load in %	4,00
Management fee in %p.a.currently	1,25 (max 1,25)
TER in %	1,35
Price Publication	www.allianzinvest.at
Hotline	01/505 54 80 - 4848
E-Mail (common information)	sales@allianzinvest.at
E-Mail (orders, account)	konto@allianzinvest.at

Top Holdings (%)

ERSTE GROUP BANK AG	9,87%
IMMOFINANZ AG	8,92%
VOESTALPINE AG	7,24%
TELEKOM AUSTRIA AG	6,76%
OMV AG	5,73%

Annual Performance (%) ^{2,3}



SRRI

This risk and reward indicator is based on past performance data and calculated in accordance with European legislation. It may not be a reliable indication of the future risk profile of the fund. The categorisation of the fund is not guaranteed and may change in the future. Even the lowest category 1 does not mean a risk-free investment.

Investment Class 4 (risk-aware)

The funds offer above-average capital gains potential in the long term, but may fluctuate relatively sharply in price and substantial losses may occur. Recommended investment period: at least 10 years.

Front-end load will be charged at the acquisition of the fund units. Any front-end loads reduce the capital employed and the performance.

Past performance is no guarantee of future results. Performance-Calculation according to method as defined by OeKB. Individual performance will vary.

The sales prospectus and business reports in german language can be obtained free of charge from Allianz Investmentbank AG and Allianz Invest Kapitalanlagegesellschaft mbH, both Hietzinger Kai 101-105, A-1130 Wien. This publication constitutes advertising. 1. Performance calculated at the net asset value, excl. front-end load. 2. The illustration is based on the accumulated performance of the stated periods excluding front-end load. 3. Front-end load is only calculated at date of investment. E.g.: Investment-amount of EUR 1000,- will be reduced by front-end load of 4% (EUR 38,46). Within custody the investor has to be aware of annual depository costs which will lower the performance of the investment.